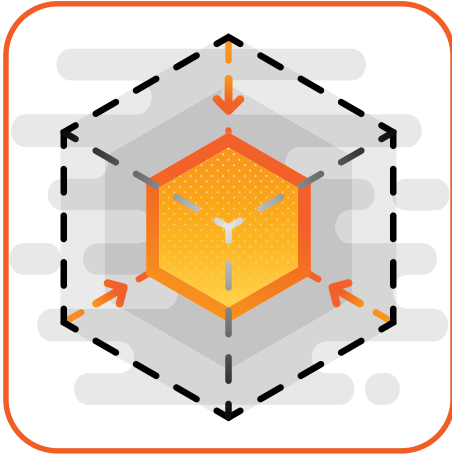


*As a data centre leader, you need to ensure the constant availability of critical assets. To achieve that goal, it's vital to choose the right solutions for remote power distribution in your facility.*

*To secure the performance of the applications and systems, here are 5 important features that you need to look for in your next Remote Power Distribution Cabinet:*

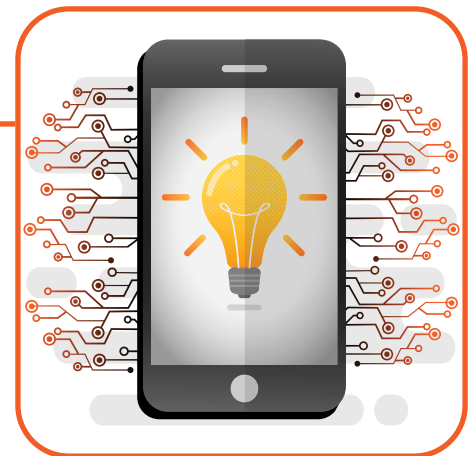


## 1. The Industry's Smallest Footprint

Space is already at a premium in your data centre. The top 10 largest EMEA data centres range from **74,300 to 9,000 m<sup>2</sup>**, while many facilities are obviously much, much smaller. You're placing servers, routers, switches, storage systems, application delivery controllers and firewalls on your precious floor space. That's why your new **Remote Power Distribution** cabinet needs to come in the industry's smallest footprint. We recommend that it be no larger than **604x329 mm** to save space for more IT equipment. In addition, you should be able to install it in multiple ways, including **back-to-back or side-by-side**, reaching up to 284 or 164 poles in a dual unit.

## 2. Unprecedented Insights with Intelligent Monitoring

Your data center team wants to up its game. You can do so by ensuring a continuous flow of power, identifying anomalies and resolving issues before they become outages. Therefore, your new **Remote Power Panel (RPP)** will need to come with an integrated, intelligent power distribution monitoring system. In addition, a **colour touchscreen** and the ability to achieve within **1.5% accuracy in voltage, current, power and energy metering are a must**. Both of these capabilities will enable your techs to review and act on accurate data, increasing your visibility and control.



## 3. Flexible Power Growth

Uncertain about your power needs in the future? You're in good company. That is why **your Remote Power Distribution cabinet needs to support the many power ranges of three-phase distribution**. Each panel board would ideally feature **two main input circuit breaker ratings** with 250 to 400 amps. That means you can support ratings of **100 to 250 amps** with one circuit breaker and **160 to 400** with the other. By buying a higher-rated panel, you'll gain enough capacity to support future growth.

## 4. Easy to Install

Whether you're outfitting existing space or building new, you want to move fast to bring new capacity online. Hence, your new **Remote Power Panel (RPP)** needs to be **pre-certified**, tested by the manufacturer's R&D department and by third parties to meet IEC 61439-2 requirements. In addition, it should come with **wiring diagrams that simplify the process of on-site installation** by your electrical designers. This reduces the effort required to wire and certify devices to a minimum.



## 5. Reduce Your Total Cost of Ownership



Data centres are CapEx-intensive businesses, and **57 % of providers say construction costs are growing. EMEA is among the top 10 most expensive markets** for building new facilities, with Zurich (#1), London (#5), Stockholm (#7) and Copenhagen (#8) leading the way. The average cost to build per MW is **\$20.6M and per m<sup>2</sup> is \$30,800** – sums that are likely increasing with material and labour shortages. All of this is placing pressure on your data centre team to rationalise costs. Thus, your remote power panel needs to come with the **lowest total cost of ownership**, have a compact form factor, embedded metering system, and the fact that it's a packaged solution that's easy to install, maintain and add extra circuits to will achieve this goal.



*Vertiv™ Liebert® RXA  
Remote Power Distribution cabinet*

As a data centre leader, you'd like to standardise your power distribution equipment purchasing and installation, so that you can scale more easily and save space for valuable IT devices. In addition, you'd like to adopt a flexible device that enables you to increase visibility and respond to emerging power demands, while controlling costs. You can count on Vertiv to help you meet these critical business and technology requirements, so that you can deliver exceptional service to your customers.

**Power up with [Vertiv™ Liebert® RXA](#), the industry's leading Remote Power Distribution unit.**