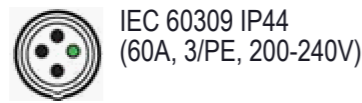
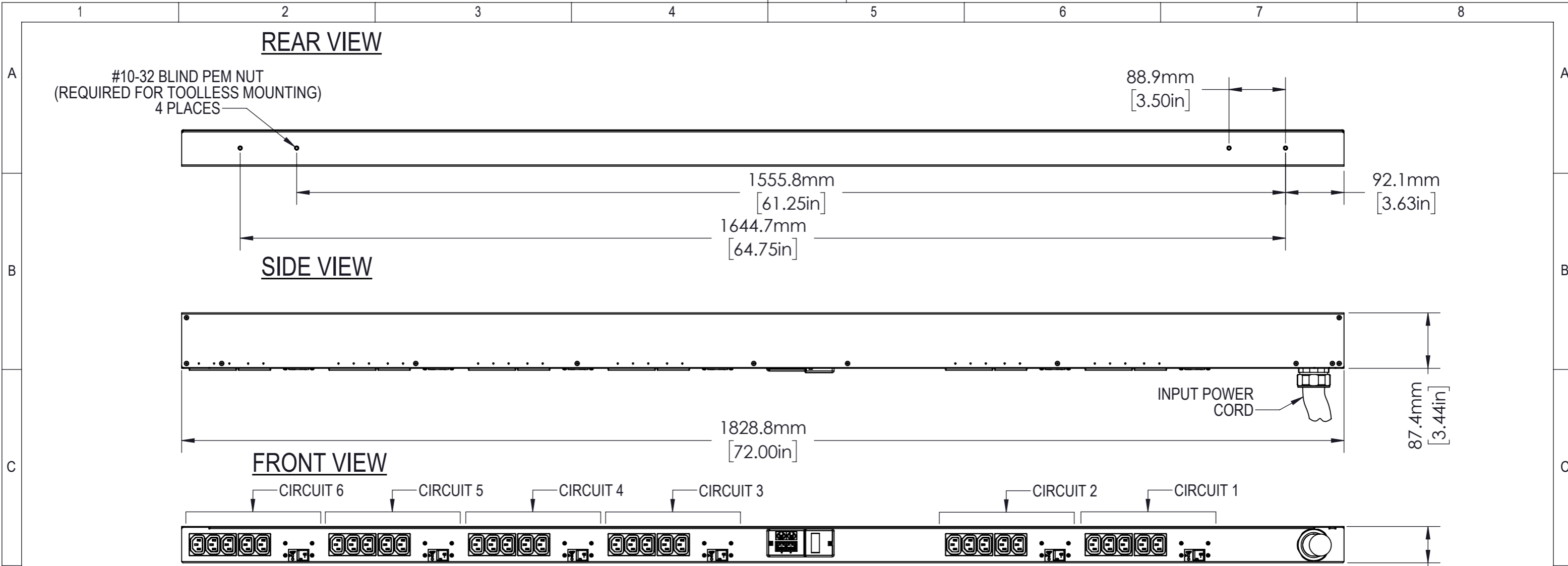


Disclosure and photocopying of this document, exploitation and communication of its contents are not permitted, unless permission is expressly granted. All rights are reserved.

Weitergabe sowie Vervielfältigung dieser Unterlage, Verwertung und Mitteilung ihres Inhalts nicht gestattet, soweit nicht ausdrücklich zugestanden. Alle Rechte vorbehalten.



AGENCY COMPLIANCE:
 UL & c-UL Listed 60950
 RoHS Compliant
 FCC Part 15 Class A Conformance

ENVIRONMENTAL RATING:
 Maximum Operating Temperature: 60C / 140F

NOTES
 UNIT DIMENSIONS: 72in x 2.25in x 3.44in / 1829mm x 58mm x 87mm
 SHIPPED WEIGHT: 30lbs (13.61kg)
 SHIPPING DIMENSIONS: 86in x 9in x 7in / 2172mm x 223mm x 159mm
 Toolless Mounting Hardware 61.25in / 1556mm and 64.75in / 1645mm, and 7938 Vertical Mounting Bracket Kit

OUTPUT POWER

CIRCUIT	PHASE	RECEPTACLE TYPE	VOLTAGE (V)	MAX. CONTINUOUS AMPS (A)	
				PER RECEPTACLE	PER CIRCUIT
1	A-B	5xC13	200-240	12	16
2	B-C	5xC13	200-240	12	16
3	C-A	5xC13	200-240	12	16
4	A-B	5xC13	200-240	12	16
5	B-C	5xC13	200-240	12	16
6	C-A	5xC13	200-240	12	16

INPUT POWER

INPUT CORD	INPUT PLUG	WIRE COUNT	FREQUENCY (Hz)	VOLTAGE (V)	RATED AMPS (A)	MAX. CONT. AMPS (A)
10 FT	IEC 60309 IP44	3/PE	50/60 Hz	200-240V	60	48

METERING PARAMETER	MEASUREMENT ACCURACY
VOLTAGE	±1%
CURRENT	±1% - Input Current ±2% - Circuit/Breaker Current

 Dimensions in mm	Allgemeintoleranzen General tolerances		Oberfläche Finish		Werkstoff / Material		Gewicht: Weight: -
	-		-		-		-
Rev.	Change	Date	Name	Bezeichnung / Description			
				Monitored, Vertical, 60A, 208V Delta, (30)C13			
				Zeichnungs-Nr. / Drawing no.			
				VP8867			
				Verwendet in / Used in			
				-			
				Blatt/Sheet			
				1:6			
				1/1			

